

SHIMANO®

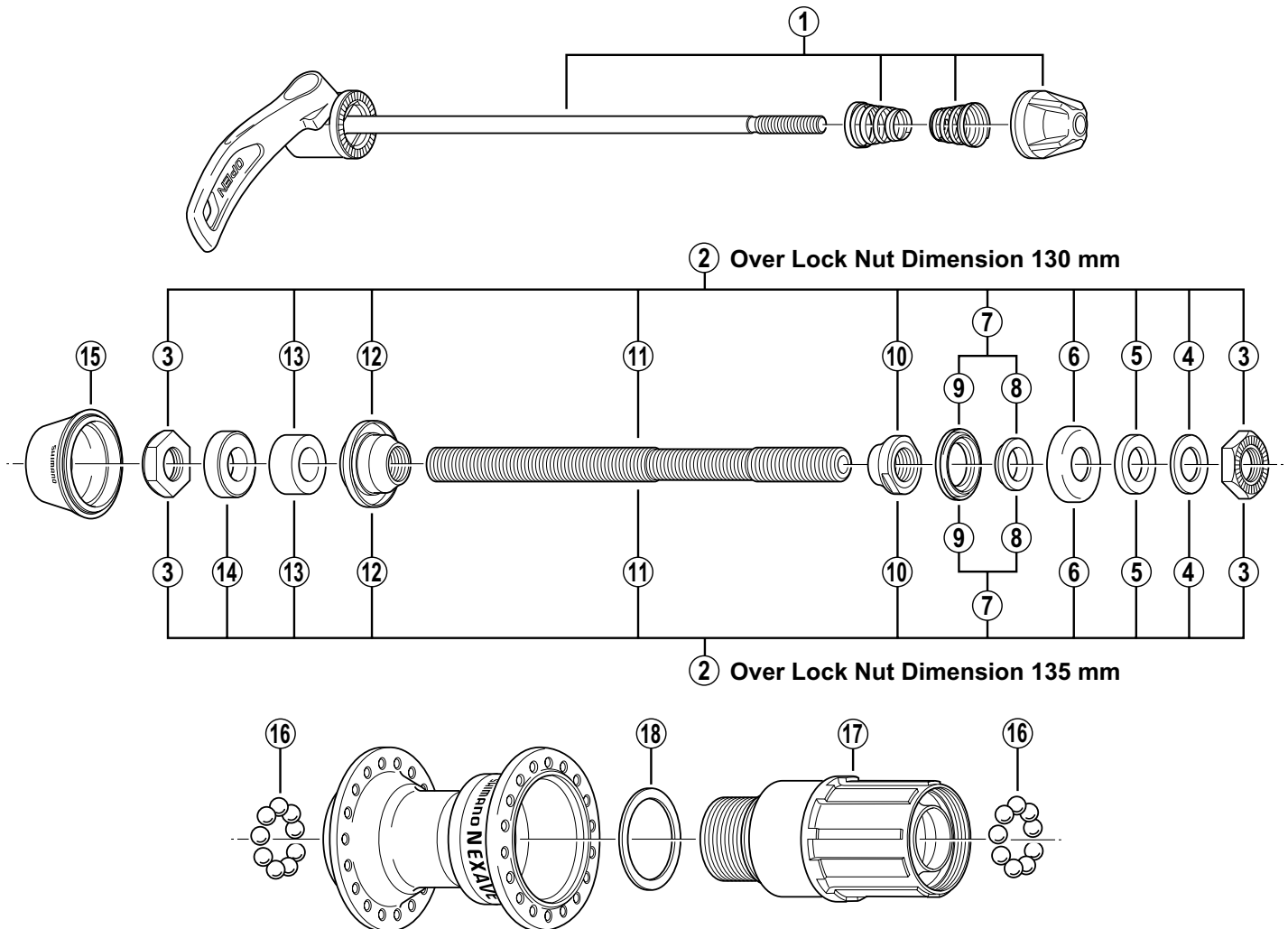
SHIMANO EUROPA
 Industrieweg 24 NL-8071 CT Nunspeet, Holland
 Phone 31-3412-72222

SHIMANO AMERICAN CORPORATION
 One Holland Irvine CA 92618 U.S.A.
 Phone 949-951-5003

Spare parts list for after market.

- You may photocopy this sheet and use it as an order form.
- Sie können dieses Blatt kopieren und als Bestellformular verwenden.
- Vous pouvez photocopier cette feuille et l'utiliser comme bon de commande.
- Dit blad kan gecopieerd en als bestelformulier gebruikt worden.
- Potete fotocopiare questo foglio e usarlo come modulo di commissione.

SHIMANO NEXAVE Freehub (Silent Clutch) **FH-T300** 7-Speed



• Use with CS-HG50-I.

Q'TY	ITEM NO.	SHIMANO CODE NO.	DESCRIPTION
	1	3-30R 90200	Complete Quick Release 163 mm (6-13/32") for O.L. 130 mm (5-1/8")
		3-30R 90220	Complete Quick Release 168 mm (6-5/8") for O.L. 135 mm (5-5/16")
	2	3-3BE 98010	Complete Hub Axle 141 mm (5-9/16") for O.L. 130 mm (5-1/8")
		3-3BE 98020	Complete Hub Axle 146 mm (5-3/4") for O.L. 135 mm (5-5/16")
	3	4-220 05011	Serated Lock Nut 4.5 mm
	4	4-301 08100	Right Hand Washer 1.2 mm
	5	4-301 06100	Right Hand Washer 2.3 mm
	6	4-3A0 05100	Right Hand Dust Cap
	7	3-32X 98020	Right Hand Axle Spacer & Seal Ring
	8	4-31V 03000	Right Hand Axle Spacer 3.7 mm
	9	4-214 06000	Seal Ring
	10	4-220 08510	Right Hand Cone (M10 x 9 mm)
	11	4-30K 01100	Hub Axle 141 mm (5-9/16") for O.L. 130 mm (5-1/8")
		4-30K 01200	Hub Axle 146 mm (5-3/4") for O.L. 135 mm (5-5/16")
	12	3-3AC 98050	Left Hand Cone (M10 x 15 mm) w/Dust Cover
	13	4-220 04110	Left Hand Axle Spacer 8 mm
	14	4-3AC 08000	Left Hand Axle Spacer 5 mm for O.L. 135 mm (5-5/16")
	15	4-3AC 04000	Rubber Seal
	16	3-000 91310	Steel Ball (1/4") 18 pcs.
	17	3-3BE 98030	Complete Freewheel Body w/Right Hand Dust Cap
	18	4-3A4 13000	Freewheel Body Washer

O.L.: Over Lock Nut Dimension

IL/FH Printed in Japan 9811-1769