

SAITO

SINGLE-CYLINDER 4-STROKE ENGINES

INSTRUCTION MANUAL

Version 2000



- FA-30S (H)
- FA-30S Golden Knight
- FA-50
- FA-50 Golden Knight
- FA-56
- FA-56 Golden Knight
- FA-65
- FA-65 Golden Knight
- FA-72
- FA-72 Golden Knight
- FA-80
- FA-80 Golden Knight
- FA-91 Special
- FA-91S Golden Knight
- FA-120 Special
- FA-120S Golden Knight
- FA-150
- FA-150 Golden Knight
- FA-180
- FA-180 Golden Knight

**VERY
IMPORTANT**

*Failure to read
and follow these
instructions before
you proceed to
start your engine
may result in
engine damage
and the voiding of
your warranty.*

Introduction

Congratulations on purchasing a Saito 4-cycle engine. When cared for properly, these high-quality, finely crafted engines offer many years of modeling enjoyment.

This instruction manual has been developed to ensure optimum performance from the Saito engine you have purchased. The instructions must be read through completely and understood thoroughly prior to mounting and running the engine.

Safety Instructions

This model engine will give you considerable pleasure, satisfaction, and performance if you strictly follow these safety instructions and take heed of the warnings as to its safe and proper use. Remember at all times **it is not a toy**, but a precision-built machine with more than enough power to cause harm if misused or if the safety precautions are not observed.

You should always:

1. Mount the engine securely in a "bench mount" or high-quality motor mount. Never clamp the engine in a vice.
2. When running the engine, be sure all spectators, especially children, are at least 20 feet away.
3. Use the correct size and pitch of propeller for your engine; refer to the "Propeller Chart" on page 16 of this manual.
4. It is extremely important to balance the propeller prior to installation of the engine. Failure to do so may cause damage to the Saito engine and/or the airframe. Install the propeller with the convex (curved) side facing forward. Securely tighten the propeller nut against the washer and propeller. An anti-loosening nut (or "jam" nut) is suggested for all 4-cycle engines.
5. Inspect the tightness of the propeller nut prior to each flight.
6. Keep your face and body away from the path of the propeller blades when starting or running your engine.
7. Never allow your hands to come close to the propeller. Utilize either a "chicken stick" or electric starter to start the engine.
8. Discard any propeller that is nicked, scratched, cracked or damaged in any way.
9. Make all carburetor adjustments from behind the propeller.
10. To stop the engine, cut off the fuel supply (pinch or disconnect the fuel line to the carburetor) or use the throttle linkage to shut off the air.

2 SAFETY INSTRUCTIONS

Do not use hands, fingers, or any other part of the body to stop the propeller.

Do not throw any object into a propeller to stop it.

It is highly recommended that:

- Safety glasses or goggles be used when starting and running your engine.
- You do not run the engine in the vicinity of loose gravel or sand. The propeller may throw such materials into your face and eyes. The engine may also ingest these harmful materials.
- Loose clothing should be avoided when operating your model engine. Loose clothing may become entangled in the propeller, creating the possibility of bodily harm. Also, all loose objects (screwdrivers, pencils, nickel cadmium starters, etc.) should be removed from your pockets so that they do not fall into the propeller.
- Glow plug clips and cords are kept away from the propeller.
- Your glow fuel is kept in a safe place well away from sparks, heat, or anything that can ignite the fuel.

Beware:

- Model engines get very hot while running. Do not attempt to handle them until they have cooled.
- Always run your model engines in a well-ventilated area. Similar to automotive engines, model engines produce possible harmful carbon monoxide fumes.
- Remember that model engines produce a substantial amount of power, more than enough to seriously injure people and/or do considerable damage to property. Always use common sense, skill and constant observation of safety precautions.

Disassembly

Do **not** needlessly disassemble your Saito engine. Only qualified individuals should perform engine repairs. Damage due to improper disassembly will not be covered under warranty. If it becomes necessary to repair the engine, such as after a crash, you can send your engine to the authorized service center at:

Horizon Hobby, Inc.
Attention: Saito Service
4105 Fieldstone Road
Champaign, IL 61822
Phone: (217) 355-9511

Engine Parts Identification

It is important to be able to identify the parts of your Saito engines. Attached you will find an exploded view of a Saito 4-stroke engine, as well as charts that include part numbers and descriptions. This will assist you in easily and rapidly identifying the respective parts of your Saito engine.

Support Equipment

The following items, which are not included with your Saito engine, are necessary in order to operate the model engine:

1. Fuel. For maximum protection and longevity of Saito engines, Saito recommends a fuel containing 20% oil and 10-15% nitro methane. If this blend is not readily available, the next best selection is a high quality 2-cycle glow fuel, such as Hangar 9 Aero-Blend, Omega, Cool Power, K&B, Power Master, etc. Use of fuels composed entirely of castor oil is **not** recommended. A mix of synthetic-castor oil is acceptable and can be found in the various fuels described above.

2. Propeller. Refer to the "Propeller Selection" chart, located on page 16, to determine the best initial propeller for your particular application. Propellers should be balanced prior to use.

3. Glow Plug Battery. Your glow plug may be properly heated by

several different sources. The Hangar 9 Power Panel (HAN106), when accompanied by a 12-volt Sealed Lead Acid Battery (HAN102) and a Glow Plug Locking Socket (HAN120) is an ideal source of heat for your glow plug. A conventional 1.5-volt heavy-duty dry cell battery with a Glow Plug Locking Socket (HAN120) or alligator clips may also be used. Additionally, there are several very good glow-starters (nickel cadmium-powered glow plug igniters) that work well.

4. Glow Plug Wrench. Used to remove and tighten glow plugs. The Hangar 9 Long Reach Plug Wrench (HAN2510) is an excellent wrench to utilize, as a longer shaft may be necessary to access the glow plug. This depends mostly upon engine installation.

5. Manual or Electric Starter. For manual starts, a "chicken stick" is highly recommended. **Never** use your fingers to start any model engine. To do so invites injury. There are a variety of electric starters on the market. The Hangar 9 12V heavy-duty Super Starter (HAN110) will work perfectly on all Saito engines.

6. Tachometer. The use of a tachometer for setting the high-speed needle valve prior to flight is encouraged. It will also be helpful when setting the idle adjustment of the carburetor(s).

Break-In

The first run on any engine, whether 2-cycle or 4-cycle, is critical to the future of the engine itself. During this time, metal mating parts (piston and cylinder, ball bearings, etc.) wear in. Care must be taken that the engine is clean and free of any dust or grit that may have accumulated while building the model.

There are two accepted methods for breaking in a new engine: test stand mounted and run or aircraft mounted and run. Either method is acceptable; however, mounting the engine to a test stand allows the engine to be observed throughout its operation, as well as elevating it above the ground and away from harmful dust and dirt.

Note: Because your engine may have been sitting for an extended period of time prior to running it, a few drops of light oil applied through the crankcase breather nipple (19 on the exploded view) and down the push-rod tubes (40) will ensure proper lubrication for the first run.

Regardless of the mounting method chosen for break-in, the following procedures are applicable:

1. Use of a fuel as described in the "Support Equipment" section on page 3 of this manual for "break-in" purposes is perfectly acceptable.
 2. Use the proper glow plugs. Your engine includes the Hangar 9/McCoy MC-4C (HAN3010) glow plugs, which are standard replacement glow plugs for these engines.
 3. To select the correct propeller, refer to the "Propeller Selection" chart on page 16 of this manual. Remember to balance the propeller prior to use.
 4. Ensure that the high-speed needle valve (85) is opened (turned counterclockwise) five full turns. This guarantees a very rich setting
- Do not adjust the low-speed needle valve (89) at this time. The low-speed needle valve is preadjusted at the factory for initial break-in. Specific instructions for adjusting the idle of engines (FA-30S(H)) using an "air-bleed" type carburetor will be described in the section "Carburetor Adjustments for Air Bleed Carburetors" on page 7.
5. The use of a tachometer is highly recommended since the adjustment of a 4-cycle engine, while similar to that of a 2-cycle engine, is more difficult to "set by ear," making it much easier to damage the engine by "over-leaning."

Starting The Engine

1. Make sure the glow plug(s) is/are installed and tightened.

2. Be sure the propeller is properly secured. The use of an anti-loosening nut, or “jam nut,” is encouraged on 4-cycle engines.

3. Make sure that the fuel tank line(s) are properly connected. The fuel pickup line should be connected to the carburetor spray bar (84), and the vent line should be connected to the pressure nipple on the muffler. The proper “plumbing” of the lines is extremely important to the performance of any engine. Saito recommends the tank be mounted approximately 5 mm lower than the carburetor center.

4. Be certain that the muffler is installed properly by oiling the threads prior to inserting the muffler into the cylinder head and that the pressure line is properly connected.

5. Fill the fuel tank.

6. Prime the engine:

- Check to make sure the glow plug is **not** connected to the heat source (glow plug clip/locking socket)
- Open the throttle fully

- Rotate the propeller in a counter-clockwise direction 5 to 6 times while plugging the end of the muffler with your finger to draw fuel into the carburetor.

Note: Saito single cylinder engines are now manufactured without the choke valve (92). Due to the excellent fuel draw characteristics of the Saito engines, the use of the choke was determined not to be necessary.

7. Start the engine:

- Turn through the prop 2 to 3 times slowly to ensure that the engine is not hydro-locked (see note below).

Note: When using an electric starter, care should be taken to be sure the engine does not become “hydro-locked” (flooded with fuel). While the electric starter will turn the engine over, it may damage the connecting rod or other components. If the engine becomes hydro-locked, simply remove the glow plug and turn the engine over a few times with the “chicken stick” or electric starter. The excess fuel will be forced to exit the engine via the cylinder head.

- Close throttle to $1/4 - 1/3$ open position.
- Rotate propeller clockwise until it is against the compression stroke.

- Connect the heating source to the glow plug.
- Using either the “chicken stick” or electric starter, spin the propeller until the engine is running.

Note: A very common error is to remove the glow plug igniter too early. It is suggested that the igniter be left attached until after the engine has been run up and the high-speed needle valve has been properly adjusted.

8. Initial break-in:

Do **not** exceed 4,000 rpm for the first 10 minutes of operation. This allows all parts to mate properly with good lubrication.

Note: Due to the excessively “rich” mixture setting, it may be necessary to leave the heat source attached to the glow plug.

Subsequent runs may be made while slightly leaning out the mixture with each tank full of fuel. Forty minutes is considered sufficient time for normal break-in prior to the first flight.

9. After break-in:

If a test stand was used for the break-in procedure, the engine may now be mounted in the aircraft using a high-quality motor mount such as those available from Saito specifically or for Saito engines.

The idle needle valve (89) (or air bleed needle valve) for the Saito .30S(H)/GK engines) may now be refined. Please refer to the "Carburetor Adjustments" section on page 6 for information on how to do so.

The valves may also be checked at this time. Refer to the "Engine Maintenance" section on page 8 for information on the valve/tappet adjustments.

The use of a tachometer is encouraged for setting the high-speed needle valve (85) prior to flight. The peak rpm should be obtained and then reduced by approximately 200 – 300 rpm by turning the high-speed needle valve counter-clockwise (richen). Each engine's peak rpm can be found on the "Propeller Chart" on page 16. Over-revving of a 4-stroke engine can cause internal damage to the engine.

Carburetor Adjustments for Two Needle Carburetors

The low-speed, or idle needle valve (89), is preadjusted at the factory for best performance during break-in. After break-in it may be necessary to “fine tune” the low speed adjustment using the following procedure:

1. Start the engine and let it warm up prior to attempting any adjustments.

2. Close the throttle slowly and adjust the low speed setting by rotating the idle needle valve (89) clockwise to lean the mixture and counterclockwise to richen the mixture.

Note: The fuel mixture is too rich if when opening the throttle rapidly the engine emits white smoke and “stutters” or “stumbles.” Correct this by rotating the idle needle valve clockwise $\frac{1}{4}$ to $\frac{1}{2}$ turn at a time until the engine transitions smoothly without hesitation upon opening the throttle rapidly.

The fuel mixture may be too lean if the engine stops at the lowest idle position, or when the throttle is rapidly opened from idle. Attempt to correct this by rotating the idle needle valve counterclockwise $\frac{1}{4}$ to $\frac{1}{2}$ turn at a time until the engine transitions smoothly without hesitation upon opening the throttle rapidly. If the situation is not rectified by counterclockwise rotations of the idle needle valve, turn the idle needle valve clockwise in $\frac{1}{4}$ to $\frac{1}{2}$ turn increments.

3. After obtaining the proper idle setting, the low rpm setting may be made through the positioning of the throttle adjustment screw, if applicable. If not, adjust the idle setting via the throttle trim of your transmitter.

Carburetor Adjustments for Air Bleed Carburetors

Note: The Saito FA-30S(H) and FA-30SGK use an air bleed carburetor.

1. Start the engine and let it warm up prior to attempting any adjustments.

2. Close the throttle slowly and adjust the airscrew setting by rotating the airscrew (89) counterclockwise to lean the mixture and clockwise to richen the mixture.

Note: The fuel mixture is too rich if when opening the throttle rapidly the engine emits white smoke and “stutters” or “stumbles.” Correct this by rotating the airscrew counterclockwise $\frac{1}{4}$ to $\frac{1}{2}$ turn at a time until the engine transitions smoothly without hesitation upon opening the throttle rapidly.

The fuel mixture may be too lean if the engine stops at the lowest idle position or if the engine stops when the throttle is rapidly opened from idle. Attempt to correct this by rotating the airscrew clockwise $\frac{1}{4}$ to $\frac{1}{2}$ turn at a time until the engine transitions smoothly without hesitation upon opening the throttle rapidly. If the situation is not rectified by clockwise rotations of the airscrew, turn the airscrew counter-clockwise in $\frac{1}{4}$ to $\frac{1}{2}$ turn increments.

3. After obtaining the proper idle setting, the low rpm setting may be made through the positioning of the throttle adjustment screw, if applicable. If not, adjust the idle setting via the throttle trim of your transmitter.

Normal Engine Operation

If break-in was accomplished on a test bench your engine may be mounted to the aircraft and flown. The initial flight should be performed with the engine adjusted for a rich fuel mixture.

1. Your Saito engine should be securely mounted to the aircraft. There are many motor mounts available; however, a high-quality metal mount, such as those manufactured by Saito exclusively for Saito engines, is considered to be the best.

2. General operating procedures that will ensure long engine life are:

- Do **not** operate the engine with a "lean" mixture.
- Regularly check all screws and nuts on both the engine and muffler.
- After 1 to 2 hours of operation, valve adjustment may be necessary. Adjust the valves as shown in the "Engine Maintenance" section.
- The Saito engines are equipped with a breather nipple (19). It is recommended that a length of

silicone tubing be attached to this crankcase breather nipple (19) and routed away from the engine compartment so the excess oil can be expelled outside of the aircraft.

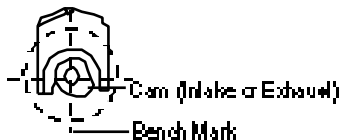
Engine Maintenance

Do not needlessly dismantle your Saito single cylinder engine.

If you must disassemble your single cylinder engine, please refer to the following steps. Remember, a qualified individual should do disassembly.

1. Cylinder screws should be loosened in a criss-cross pattern.
2. Assemble the cam gear lining up the timing mark at the "6 o'clock" position. The crankshaft must be positioned at the "12 o'clock" or "top dead center" (TDC) position (refer to Figure 1 below).

Figure 1



3. Reassemble the piston, rod, rocker arm, pins, pushrod, tappet, etc., in their original positions. Engine parts are mated after running the engine and they must be reassembled as close as possible to their original position.

4. Assemble the engine, reversing the criss-cross pattern used in the disassembly. Prior to tightening each of the screws, apply a drop of oil to prevent thread damage.

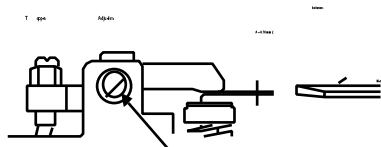
Normal engine maintenance, such as adjusting the valves or carburetor maintenance, is permissible without voiding the warranty. **If you have any questions concerning maintenance procedures, please contact the Saito Service Center at (217) 355-9511.** Our technicians will be happy to advise you on maintenance issues.

Valve/Tappet Gap Adjustment

After approximately one hour of operation, tappet gap adjustment may be necessary. When you check the valves, lubricate the moveable parts. Also make sure the screw is in tight before making adjustments to valves. Adjust the valves to a clearance of .03 mm to .10 mm (.002" – .004") using the supplied gauge. The valves must be adjusted with the engine cold due to thermal expansion.

Note: Valves must be in the compression stroke or closed position as shown in Figure 2 below. When adjustment is completed, make sure you tighten the lock nut.

Figure 2



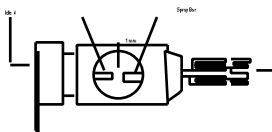
Carburetor Maintenance

Should you experience difficulty with the carburetor of your engine:

1. Check the position of the idle needle valve (89) by fully opening the throttle barrel (87). Look down through the barrel and check the space between the idle needle and the spray bar (84). The spacing should be approximately 1mm. If not, adjust accordingly. Refer to Figure 3 below.

Note: Step 1 applies to .50 through .80 engines **only**.

Figure 3



2. Remove the high-speed needle (85) and flush out the spray bar with clean fuel. Replace the high-speed needle and follow the instructions in the Carburetor Adjustment section.
3. Always use a high-quality 4-cycle glow plug. The Hangar 9/McCoy MC-4C is highly recommended.

Tips For Extended Engine Life

To add longer life to your Saito engine, the following recommendations are made:

1. Use a high-quality fuel containing 20% lubricants.
2. Use recommended glow plugs.
3. Use the proper propeller size and balance the propeller prior to use.
4. Use a tachometer for precise engine adjustments.
5. Use an “after-run” oil when you’re finished flying for the day. Hangar 9 After Run fuel is recommended.
6. For long-term storage, make sure there is no fuel left in the tank and the engine. Remove the glow plug(s) and apply several drops of high-quality light oil (e.g., a good quality light machine oil or Marvel Air Tool Oil) to the top of the engine, into the glow plug hole, down the pushrod tubes, and through the crankcase pressure vent (breather nipple). Rotate the crankshaft several times. Store the engine in the box or on the airplane with the nose down in order to keep oil in the bearings.

Troubleshooting

Generally speaking, there are very few things that will keep today's modern glow engines from starting. To that end, make sure you're using good quality "fresh" fuel, there are good glow plugs installed, and the starting battery is charged and in good condition. Should the engine fail to start after these items are verified, refer to the following troubleshooting chart on page 12.

SYMPTOM	CAUSE	CORRECTIVE ACTION
Engine fails to start	Low voltage on starting battery	Replace/recharge the starting battery
	Bad glow plug(s)	Inspect/replace bad glow plug
	Insufficient priming	Repeat priming procedure
	“Flooded” due to excessive priming	Disconnect battery, remove the glow plugs, and rotate the propeller several times to “clear” the cylinder
Engine fires but does not run	Over primed	Disconnect battery and rotate propeller several times to “clear” cylinder
Engine starts but slows down and then stops	Mixture too rich	Close high-speed needle valve $\frac{1}{2}$ turn and start again. Repeat until engine is running smoothly.
Engine starts, speeds up, and then quits	Mixture too lean	Open high-speed needle valve $\frac{1}{2}$ turn and start again. Repeat until engine is running smoothly.
Engine quits when starter battery is removed	Mixture too rich	Close high-speed needle valve $\frac{1}{2}$ turn and restart
	Incorrect glow plugs	Change glow plugs
	Incorrect or bad fuel	Change fuel

In the event that none of the above procedures results in the engine running properly, contact our service department for suggestions:

Horizon Service Center
4105 Fieldstone Road
Champaign, Illinois 61822
217-355-9511 (Mon-Fri 8:00-5:00 CST)

Figure 4A

Small Single-Cylinder Cross-Reference Chart

PART	NN FA-30S-GK	MM FA30-S (H)	E FA-50	F FA-50GK	II FA-56	JJ FA-56GK	RR FA-72	SS FA-72GK
01 Cylinder, Left	30S01	30SH01	5001B	50GK01B	5601B	56GK01B	8001C	80GK01C
06 Piston	30S06	30S06	5006	5006	5606	5606	8006A	8006A
07 Piston Pin	30S07	30S07	5007	5007	5607	5607	8007	8007
08 Piston Pin Retainer (6 Pc)	30S08	30S08	5008	5008	5608	5608	8008	8008
09 Piston Ring	60T09	60T09	5009	5009	5609	5609	8009	8009
10 Connecting Rod	30S10A	30S10A	5010A	5010A	5610	5610	7210	7210
14 Cylinder Screw Set	5014	5014	5014	5014	5014	5014	6514	6514
15 Crankcase	30S15	30SH15	5015B	50GK15B	5615A	56GK15A	7215	72GK15
17 Rear Cover (A)	30S17	30SH17	5017B	50GK17B	5017B	50GK17B	7217	7217
19 Breather Nipple	30S19	30S19	5019	5019	5019	5019	6519	6519
20 Front Ball Bearing	30S20A	30S20A	5020A	5020A	5020A	5020A	6520A	6520A
22 Rear Ball Bearing	30S22	30S22	5022A	5022A	5022A	5022A	6522A	6522A
23 Crankshaft	30S23	30S23	5623A	5623A	5623A	5623A	7223	7223
24 Pinion-Crankshaft	30S24	30S24	5024	5024	5024	5024	—	—
25 Pinion Gear Pin	5025	5025	5025	5025	5025	5025	—	—
26 Collar, Crankshaft	—	—	5026	5026	5026	5026	—	—
27 Tapered Collet & Drive Flange	30S27	30S27	5027	5027	5027	5027	7227	7227
28 Prop Washer & Nut	30S28	30S28	5628	5628	5628	5628	5628	5628
29 Prop Nut, Spinner	—	—	—	—	—	—	—	—
30 Prop Nut, Electric Starter	30S30	30S30	5030A	5030A	5030A	5030A	5030A	5030A
31 Crankcase Screw Set	30S31	30S31	5031	5031	5031	5031	7231	7231
32 Engine Gasket Set	30S32A	30S32A	5032A	5032A	5632A	5632A	7232	7232
33 Cam Gear Housing	30S33	30SH33	5033A	50GK33A	5033A	50GK33A	7233	7233
35 Cam Gear, Right	30S35	30S35	5035	5035	5035	5035	6535A	6535A
36 Cam Gear Shaft	30S36	30S36	5036	5036	5036	5036	7236	7236
37 Teflon/Steel Washer Set	30S37	30S37	5037	5037	5037	5037	5037	5037
38 Tappet (2 Pc)	30S38	30S38	5038	5038	5038	5038	5038	5038
39 Pushrod (2 Pc)	30S39	30S39	5039	5039	5039	5039	7239	7239
40 Pushrod Cover Rubber Seal (Pr)	30S40	30S40	5040	5040	5040	5040	7240	7240
41 Rocker Arm (Pr)	60141	60141	5041	5041	5041	5041	5041	5041
42 Rocker Arm Screw Nut (2 Sets)	5042	5042	5042	5042	5042	5042	5042	5042
43 Rocker Arm Pin (2 Pc)	30S43	30S43	5043	5043	5043	5043	5043	5043
44 Rocker Arm Bracket, Left	—	—	—	—	—	—	—	—
45 Rocker Arm Bracket, Right	—	—	—	—	—	—	—	—
46 Valve-In/Out (Pr)	30S46	30S46	5046	5046	5646	5646	6546	6546
47 Valve Spring, Keeper, Retainer (2 Sets)	30S47	30S47	5047	5047	5047	5047	6547	6547
48 Valve Retainer (4 Pc)	5048	5048	5048	5048	5048	5048	5048	5048
49 Rocker Arm Cover (Pr)	30SGK49	30SH49	5049	50GK49	5049	50GK49	5049	50GK49
68 Check Valve-In/Out (Pr)	—	—	—	—	—	—	—	—
69 Intake Manifold, Left	—	—	5069	5069	5669A	5669A	7269	7269
74 Muffler, Right	30S74	30S74	5074B	5074B	5074B	5074B	8074A	8074A
75 Muffler Manifold, Standard	30S75	30S75	5075A	5075A	5075A	5075A	8075A	8075A
79 Muffler Gasket (5 Pc)	—	—	—	—	—	—	—	—
80 Muffler Nut (2 Pc)	30S80	30S80	5080A	5080A	5080A	5080A	8080A	8080A
821 Carburetor-Complete, Left	30S821	30S821	50821B	50821B	50821B	50821B	72821	72821
822 Carburetor-Complete, Right	—	—	—	—	—	—	—	—
831 Carburetor Body Assembly, Left	30S831	30S831	50831	50831	50831	50831	72831	72831
84 Spray Bar Assembly	30S84	30S84	—	—	—	—	—	—
85 High Speed Needle Valve	30S85	30S85	5085	5085	5085	5085	5085	5085
86 High Speed Needle Valve Extension	—	—	5086	5086	5086	5086	5086	5086
87 Throttle Barrel Assembly	30S87	30S87	5087A	5087A	5087A	5087A	7287	7287
88 Throttle Lever	30S88	30S88	5088B	5088B	5088B	5088B	5088B	5088B
89 Idle Needle Valve	30S89	30S89	5089	5089	5089	5089	130189	130189
90 Carburetor Screw & Spring Set	30S90	30S90	5090A	5090A	5090A	5090A	7290	7290
91 Carburetor Gasket Set	30S91	30S91	5091	5091	5091	5091	8091A	8091A
92 Choke Valve Assembly	—	—	5092	5092	5092	5092	5092	5092
93 Intake Velocity Stack	—	—	—	50GK93	—	50GK93	—	50GK93
95 Engine Mount	30S95	30S95	5095	5095	5095	5095	5095	5095
96 Tool Set	30S96	30S96	5096A	5096A	5096A	5096A	5096A	5096A
97 Instruction Manual	MAN1	MAN1	MAN1	MAN1	MAN1	MAN1	MAN1	MAN1
102 Fuel Pump System	—	—	—	—	—	—	—	—
109 F-1 Fuel Filler	50109	50109	50109	50109	50109	50109	50109	50109
110 Anti-Loosening Nut	—	—	56110	56110	56110	56110	56110	56110
111 Flexible Exhaust Pipe	—	—	—	—	—	—	65111	65111
112 Tuned Silencer	—	—	—	—	—	—	62112	65112
113 Flexible Exhaust Pipe	—	—	—	—	—	—	—	—
114 Engine Bed	—	—	50114	50114	50114	50114	50114	50114
115 Engine Bed	—	—	—	—	—	—	—	—
116 M3 Nut for Spinner	—	—	50116	50116	50116	50116	—	—
117 M4 Nut for Spinner	—	—	—	—	—	—	65117	65117
118 M5 Nut for Spinner	—	—	—	—	—	—	65118	65118
122 Spray Bar/O-Ring	—	—	65122	65122	65122	65122	72122	72122
135 Prop Washer/Nut/Anti-Loosening Nut	—	—	56135	56135	56135	56135	56135	56135
136 Intake Manifold	—	—	—	—	—	—	—	—
137 Prop Washer	—	—	—	—	—	—	—	—

Medium Single-Cylinder Cross-Reference Chart

Figure 4B

PART	G FA-65	H FA-65GK	I FA-80	J FA-80GK	K FA-91S	EE FA-91SGK
01 Cylinder, Left	6501C	65GK01C	8001C	80GK01C	91S01A	91SGK01A
06 Piston	6506A	6506A	8006A	8006A	91S06	91S06
07 Piston Pin	6507	6507	8007	8007	91S07	91S07
08 Piston Pin Retainer (6 Pc)	6508	6508	8008	8008	6508	6508
09 Piston Ring	6509	6509	8009	8009	91S09	91S09
10 Connecting Rod	6510C	6510C	8010C	8010C	6510C	6510C
14 Cylinder Screw Set	6514	6514	8014	8014	6514	6514
15 Crankcase	6515A	65GK15A	8015A	80GK15A	91S15	91SGK15
17 Rear Cover (A)	6517A	65GK17A	8017A	80GK17A	91S17	91SGK17
19 Breather Nipple	6519	6519	8019	8019	6519	6519
20 Front Ball Bearing	6520A	6520A	91S20A	91S20A	91S20A	91S20A
22 Rear Ball Bearing	6522A	6522A	8022A	8022A	91S22A	91S22A
23 Crankshaft	6523A	6523A	8023	8023	91S23	91S23
24 Pinion-Crankshaft	—	—	—	—	—	—
25 Pinion Gear Pin	—	—	—	—	—	—
26 Collar, Crankshaft	—	—	—	—	—	—
27 Tapered Collet & Drive Flange	6527	6527	6527	6527	6527	6527
28 Prop Washer & Nut	5628	5628	5628	5628	5628	5628
29 Prop Nut, Spinner	—	—	—	—	—	—
30 Prop Nut, Electric Starter	5030A	5030A	5030A	5030A	5030A	5030A
31 Crankcase Screw Set	5031	5031	5031	5031	5031	5031
32 Engine Gasket Set	6532A	6532A	8032A	8032A	91S32	91S32
33 Cam Gear Housing	6533B	65GK33B	8033B	80GK33A	6533B	80GK33A
35 Cam Gear, Right	6535A	6535A	6535A	6535A	6535A	6535A
36 Cam Gear Shaft	5036	65GK36A	5036	5036	5036	5036
37 Teflon/Steel Washer Set	5037	5037	5037	5037	5037	5037
38 Tappet (2 Pc)	5038	5038	5038	5038	5038	5038
39 Pushrod (2 Pc)	6539	6539	6539	6539	91S39	91S39
40 Pushrod Cover Rubber Seal (Pr)	6540	6540	6540	6540	60740	60740
41 Rocker Arm (Pr)	5041	5041	5041	5041	5041	5041
42 Rocker Arm Screw Nut (2 Sets)	5042	5042	5042	5042	5042	5042
43 Rocker Arm Pin (2 Pc)	5043	5043	5043	5043	5043	5043
44 Rocker Arm Bracket, Left	—	—	—	—	—	—
45 Rocker Arm Bracket, Right	—	—	—	—	—	—
46 Valve-In/Out (Pr)	6546	6546	6546	6546	91S46	91S46
47 Valve Spring, Keeper, Retainer (2 Sets)	6547	6547	6547	6547	6547	6547
48 Valve Retainer (4 Pc)	5048	5048	5048	5048	5048	5048
49 Rocker Arm Cover (Pr)	5049	50GK49	5049	50GK49	5049	50GK49
68 Check Valve-In/Out (Pr)	—	—	—	—	—	—
69 Intake Manifold, Left	6569	6569	8069A	8069A	91S69	91S69
74 Muffler, Right	6574A	6574A	8074A	8074A	91S74	91S74
75 Muffler Manifold, Standard	8075A	8075A	8075A	8075A	8075A	8075A
76 Muffler Gasket (5 Pc)	—	—	—	—	—	—
80 Muffler Nut (2 Pc)	8080A	8080A	8080A	8080A	8080A	8080A
821 Carburetor-Complete, Left	50821B	50821B	80821B	80821B	91S821A	91S821A
822 Carburetor-Complete, Right	—	—	—	—	—	—
831 Carburetor Body Assembly, Left	50831	50831	80831A	80831A	91S831A	91S831A
84 Spray Bar Assembly	—	—	—	—	—	—
85 High Speed Needle Valve	5085	5085	5085	5085	5085	5085
86 High Speed Needle Valve Extension	5086	5086	5086	5086	5086	5086
87 Throttle Barrel Assembly	5087A	5087A	8087A	8087A	91S87	91S87
88 Throttle Lever	5088B	5088B	5088B	5088B	5088B	5088B
89 Idle Needle Valve	5089	5089	5089	5089	130789	130789
90 Carburetor Screw & Spring Set	5090A	5090A	5090A	5090A	91S90	91S90
91 Carburetor Gasket Set	6591A	6591A	8091A	8091A	91S91	91S91
92 Choke Valve Assembly	5092	5092	5092	5092	5092	5092
93 Intake Velocity Stack	—	50GK93	—	50GK93	—	50GK93
95 Engine Mount	6595	6595	6595	6595	6595	6595
96 Tool Set	6596A	6596A	6596A	6596A	6596A	6596A
97 Instruction Manual	MAN1	MAN1	MAN1	MAN1	MAN1	MAN1
102 Fuel Pump System	—	—	—	—	—	—
109 F-1 Fuel Filler	50109	50109	50109	50109	50109	50109
110 Anti-Loosening Nut	65110	65110	65110	65110	65110	65110
111 Flexible Exhaust Pipe	65111	65111	65111	65111	65111	65111
112 Tuned Silencer	65112	65112	65112	65112	65112	65112
113 Flexible Exhaust Pipe	—	—	—	—	—	—
114 Engine Bed	65114	65114	65114	65114	65114	65114
115 Engine Bed	—	—	—	—	—	—
116 M3 Nut for Spinner	50116	50116	—	—	—	—
117 M4 Nut for Spinner	65117	65117	65117	65117	65117	65117
118 M5 Nut for Spinner	65118	65118	65118	65118	65118	65118
122 Spray Bar/O-Ring	65122	65122	65122	65122	91S122	91S122
135 Prop Washer/Nut/Anti-Loosening Nut	56135	56135	56135	56135	56135	56135
136 Intake Manifold	—	—	—	—	—	—
137 Prop Washer	—	—	—	—	—	—

Large Single-Cylinder Cross-Reference Chart

Figure 4C

PART	M FA-120SH	FF FA-120SGK	CC FA-150	GG FA-150GK	OO FA180	PP FA-180GK
01 Cylinder, Left	120S01A	120SGK01A	15001	150S01	18001	180GK01
06 Piston	120S06	120S06	150S06	150S06	18006	18006
07 Piston Pin	120S07	120S07	120S07	120S07	18007	18007
08 Piston Pin Retainer (6 Pc)	120S08	120S08	300T08	300T08	300T08	300T08
09 Piston Ring	120S09	120S09	300T09A	300T09A	18009	18009
10 Connecting Rod	120S10C	120S10C	120S10C	120S10C	18010A	18010A
14 Cylinder Screw Set	120S14	120S14	120S14	120S14	120S14	120S14
15 Crankcase	120S15B	120SGK15A	150S15A	150S15A	18015	18015
17 Rear Cover (A)	120S17A	150S17	120S17A	150S17	18017	18017
19 Breather Nipple	6519	6519	6519	6519	6519	6519
20 Front Ball Bearing	120S20A	120S20A	120S20A	120S20A	120S20A	120S20A
22 Rear Ball Bearing	120S22	120S22	120S22	120S22	120S22	120S22
23 Crankshaft	120S23A	120S23A	150S23A	150S23A	18023	18023
24 Pinion-Crankshaft	—	—	—	—	—	—
25 Pinion Gear Pin	—	—	—	—	—	—
26 Collar, Crankshaft	—	—	—	—	—	—
27 Tapered Collar & Drive Flange	120S27A	120S27A	120S27A	120S27A	120S27A	120S27A
28 Prop Washer & Nut	170R328	170R328	170R328	170R328	170R328	170R328
29 Prop Nut, Spinner	120S29	120S29	120S29	120S29	120S29	120S29
30 Prop Nut, Electric Starter	120S30	120S30	120S30	120S30	120S30	120S30
31 Crankcase Screw Set	5031	5031	5031	5031	5031	5031
32 Engine Gasket Set	120S32	120S32	120S32	150S32	18032	18032
33 Cam Gear Housing	120S33	150S33	120S33	150S33	120S33	150S33
35 Cam Gear, Right	120S35	120S35	120S35	120S35	120S35	120S35
36 Cam Gear Shaft	5036	5036	5036	5036	5036	5036
37 Teflon/Steel Washer Set	120S37	120S37	120S37	120S37	120S37	120S37
38 Tappet (2 Pc)	120S38	120S38	120S38	120S38	120S38	120S38
39 Pushrod (2 Pc)	120S39	120S39	120S39	120S39	120S39	120S39
40 Pushrod Cover Rubber Seal (Pr)	120S40	120S40	120S40	120S40	120S40	120S40
41 Rocker Arm (Pr)	120S41	120S41	120S41	120S41	120S41	120S41
42 Rocker Arm Screw Nut (2 Sets)	120S42	120S42	120S42	120S42	300T42	300T42
43 Rocker Arm Pin (2 Pc)	120S43	120S43	120S43	120S43	120S43	120S43
44 Rocker Arm Bracket, Left	120S44	120S44	120S44	120S44	120S44	120S44
45 Rocker Arm Bracket, Right	120S45	120S45	120S45	120S45	120S45	120S45
46 Valve-In/Out (Pr)	120S46	120S46	120S46	120S46	18046	18046
47 Valve Spring, Keeper, Retainer (2 Sets)	120S47	120S47	120S47	120S47	120S47	120S47
48 Valve Retainer (4 Pc)	120S48	120S48	120S48	120S48	120S48	120S48
49 Rocker Arm Cover (Pr)	150S49	120S49	150S49	120S49	150S49	120S49
68 Check Valve-In/Out (Pr)	—	—	—	—	—	—
69 Intake Manifold, Left	150S69A	150S69A	150S69A	150S69A	18069	18069
74 Muffler, Right	120S74A	120S74A	120S74A	120S74A	18074	18074
75 Muffler Manifold, Standard	120S75A	120S75A	120S75A	120S75A	120S75A	120S75A
79 Muffler Gasket (5 Pc)	—	—	—	—	—	—
80 Muffler Nut (2 Pc)	120S80	120S80	120S80	120S80	120S80	120S80
821 Carburetor-Complete, Left	120S821C	120S821C	150S821A	150S821A	180821	180821
822 Carburetor-Complete, Right	—	—	—	—	—	—
831 Carburetor Body Assembly, Left	120S831B	120S831B	150S831A	150S831A	180831	180831
84 Spray Bar Assembly	450R3D84A	450R3D84A	450R3D84A	450R3D84A	450R3D84A	450R3D84A
85 High Speed Needle Valve	120S85	120S85	120S85	120S85	120S85	120S85
86 High Speed Needle Valve Extension	5086	5086	5086	5086	5086	5086
87 Throttle Barrel Assembly	120S87A	120S87A	150S87	150S87	18087	18087
88 Throttle Lever	5088B	5088B	5088B	5088B	5088B	5088B
89 Idle Needle Valve	120S89	120S89	120S89	120S89	18089	18089
90 Carburetor Screw & Spring Set	120S90A	120S90A	120S90A	120S90A	120S90A	120S90A
91 Carburetor Gasket Set	120S91	120S91	150S91	150S91	150S91	150S91
92 Choke Valve Assembly	120S92	120S92	120S92	120S92	—	—
93 Intake Velocity Stack	120S93	120S93	120S93	120S93	18093	18093
95 Engine Mount	120S95	120S95	120S95	120S95	120S95	120S95
96 Tool Set	120S96	120S96	120S96	120S96	120S96	120S96
97 Instruction Manual	MAN1	MAN1	MAN1	MAN1	MAN1	MAN1
102 Fuel Pump System	—	—	—	—	—	—
109 F-1 Fuel Filler	50109	50109	50109	50109	50109	50109
110 Anti-Loosening Nut	170R3110	170R3110	170R3110	170R3110	170R3110	170R3110
111 Flexible Exhaust Pipe	120S111	120S111	120S111	120S111	120S111	120S111
112 Tuned Silencer	—	—	—	—	—	—
113 Flexible Exhaust Pipe	—	—	—	—	—	—
114 Engine Bed	—	—	—	—	—	—
115 Engine Bed	—	—	—	—	—	—
116 M3 Nut for Spinner	—	—	—	—	—	—
117 M4 Nut for Spinner	—	—	—	—	—	—
118 M5 Nut for Spinner	—	—	—	—	—	—
122 Spray Bar/O-Ring	450R3D122A	450R3D122A	450R3D122A	450R3D122A	450R3D122A	450R3D122A
135 Prop Washer/Nut/Anti-Loosening Nut	170R3135	170R3135	170R3135	170R3135	170R3135	170R3135
136 Intake Manifold	—	—	—	—	—	—
137 Prop Washer	—	—	—	—	—	—

Propeller Selection

In the chart below you will find a propeller selection list. This chart will enable you to select the best propeller for initial setup of your Saito engine.

Remember, it is imperative to balance each propeller prior to installation onto your Saito engine. Failure to do so may cause unwanted vibration in your aircraft.

Figure 5

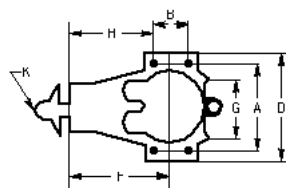
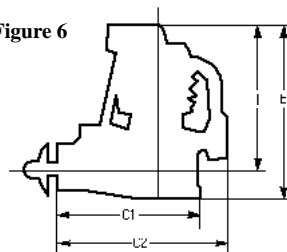
You will note a letter (A, B,C, etc.) stamped on the top of the motor mount. This letter identifies the production version of your engine. Should you ever need to order a part or have a question pertaining to your engine, specify this letter along with the engine type. This will allow for easier identification of your engine.

Saito Single-Cylinder Propeller Chart

NOTE: All recommendations are based on engines using APC props, Power Master 15% 2-stroke fuel, and McCoy MC-4C glow plugs.

ENGINE	SPORT	SCALE	AEROBATICS
FA-30S (H)/30SGK 2,200 – 12,000 rpm	10 x 5	10 x 5, 10 x 6	9 x 6, 10 x 5
FA-50/50GK 2000 – 12,000 rpm	11 x 7, 11 x 8, 12 x 6	12 x 5, 12 x 6	11 x 7, 11 x 8, 12 x 6
FA-56/56GK 2000 – 12,000 rpm	11 x 8, 12 x 6, 12 x 7	12 x 6, 12 x 7	11 x 8, 12 x 6, 12 x 4
FA-65/65GK 2000 – 11,500 rpm	12 x 6, 12 x 8, 13 x 8	13 x 8, 14 x 5, 14 x 6	11 x 9, 12 x 8, 13 x 6
FA-72/72GK 2000 – 11,500 rpm	12 x 8, 13 x 6, 13 x 8, 14 x 6	13 x 6, 13 x 8, 14 x 6, 15 x 4	11 x 9, 11 x 10, 12 x 8, 12 x 9
FA-80/80GK 2000 – 11,500 rpm	12 x 8, 13 x 6, 13 x 8, 14 x 6	13 x 6, 13 x 8, 14 x 6, 15 x 4	11 x 9, 11 x 10, 12 x 8, 12 x 9
FA-91S/91SGK 2000 – 11,000 rpm	12 x 8, 13 x 7, 13 x 8, 14 x 6, 14 x 8	13 x 7, 13 x 8, 14 x 5 14 x 6, 15 x 4	11 x 10, 11 x 11, 12 x 9 12 x 10N, 13 x 9
FA-120S/120SGK 2000 – 11,000 rpm	14 x 10, 15 x 8, 15 x 10 16 x 16, 16 x 8	15 x 8, 16 x 6, 16 x 8, 18 x 6	13.5 x 13.5, 14 x 10N 14 x 12
FA-150/150GK 2000 – 10,500 rpm	15 x 8, 15 x 10, 16 x 8 18 x 6, 18 x 8	16 x 8, 18 x 6, 18 x 8,	14 x 10N, 14 x 14, 15 x 10, 15 x 11
FA-180/180GK 2000 – 11,000 rpm	15 x 8, 15 x 10, 15 x 11 16 x 8, 16 x 10	16 x 8, 16 x 10, 18 x 6	14 x 13.5, 15 x 12

NOTE: Observe operating rpm ranges as excessive rpm can result in damage to the engine.

Figure 6**Figure 7****OUTSIDE DIMENSIONS (mm)**

Items	A	B	B1	B2	C1	C2	D	E	F	G	H	I
FA-30S (H)/30S GK	36	14	—	—	88	110	43	87	47	29	33	72
FA-50/FA-50GK	46	15	—	—	103	130	54	102	59	32	52	84
FA-56/FA-56GK	46	15	—	—	103	130	54	102	59	32	52	84
FA-65/FA-65GK	50	21	—	—	113	144	60	113	66	40	55	93
FA-72/FA-72GK	46	—	—	—	113	136	54	112	77.5	36	59.5	94
FA-80/FA-80GK	50	21	—	—	113	144	60	113	66	40	55	93
FA-91 Special/FA-91SGK	50	21	—	—	114	146	60	113	66	40	55	93
FA-120 Special/FA-120SGK	59	24	—	—	150	175	69	132	80	45	68	110
FA-150/FA-150GK	59	24	—	—	150	175	69	132	80	45	68	110
FA-180/FA-180GK	59	24	—	—	150	175	69	132	80	45	68	110

Figure 8**SPECIFICATIONS**

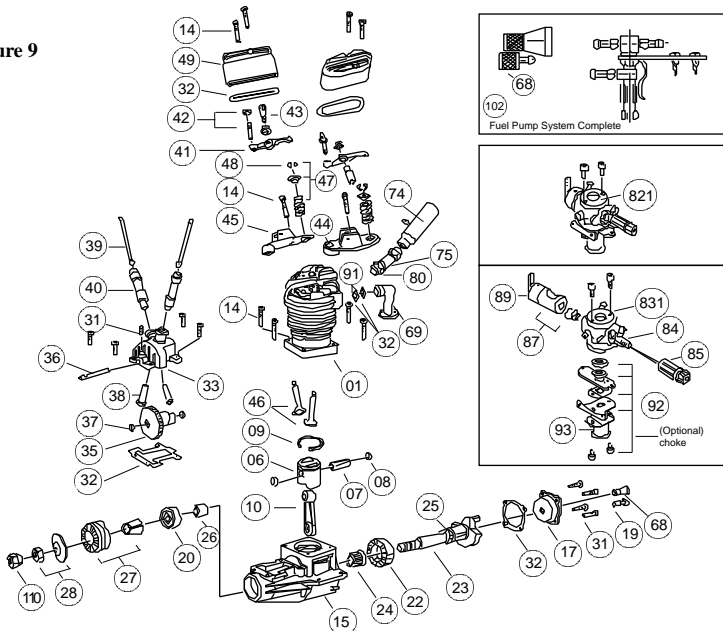
Items	Disp (cc)	Bore (mm)	Stroke (mm)	Weight (g)	K (ISO)	Cylinder	HP
FA-30S (H)/30S GK	5.03	20	16	270	1/4x28	AAC	—
FA-50/FA-50GK	8.2	23.4	19.0	435	M7x1	— ABC	0.85
FA-56/FA-56GK	9.2	24.8	19.0	440	M7x1	— ABC	0.93
FA-65/FA-65GK	10.6	24.8	22.0	550	M7x1	— ABC	0.95
FA-72/FA-72GK	11.8	27.0	20.6	470	M7x1	— AAC	1.2
FA-80/FA-80GK	13.1	27.0	22.8	540	M7x1	— ABC	1.3
FA-91 Special/FA-91SGK	14.9	28.2	24.0	520	M7x1	— AAC	1.7
FA-120 Special/FA-120SGK	20.0	32.0	24.8	820	M8x1.25	— AAC	2.2
FA-150/FA-150GK	25.0	34.0	27.6	850	M8x1.25	— AAC	2.5
FA-180/FA-180GK	29.1	36.0	28.6	880	M8x1.25	— AAC	2.8

PARTS LIST

No.	Description	Qty.
01	Cylinder (left)	1
06	Piston	1
07	Piston pin	1
08	Piston pin retainer	2
09	Piston ring	1
10	Connecting rod	1
14	Cylinder screw set	1 set
15	Crankcase	1
17	Rear cover	1
19	Breather nipple	1
20	Front bearing	1
22	Rear bearing	1
23	Crankshaft	1
24	Pinion (crankshaft)	1
25	Pinion gearpin	1
26	Collar (crankshaft)	1
27	Taper collet & drive flange	1 each
28	Prop washer & nut	1 set
29	Prop nut-spinner	
30	Prop nut-electric starter	
31	Crankcase screw set	1 set
32	Engine gasket set	1 set
33	Cam gear housing	1
35	Cam gear	1
36	Cam gear shaft	1
37	Steel washer set	1 set
38	Tappet	2

No.	Description	Qty.
39	Pushrod	2
40	Pushrod cover & rubber seal	2 each
41	Rocker arm	2
42	Rocker arm screw & nut	2 each
43	Rocker arm pin	2
44	Rocker arm bracket (left)	1
45	Rocker arm bracket (right)	1
46	Valve (in & out)	2
47	Valve spring & keeper & retainer	2 each
48	Valve retainer	
49	Rocker arm cover	2
68	Checkvalve (in & out)	1 pair
69	Intake manifold	1
74	Muffler	1
75	Muffler manifold	1
77	Muffler gasket	5
80	Muffler nut	2
89	Idle needle valve	1
821	Carburetor complete	1 set
831	Carburetor body assembly	1 set
84	Spray bar assembly	
85	High speed needle valve	1
87	Throttle barrel assembly	1 set
91	Carburetor gasket set	1 set
93	Intake velocity stack	1 set
102	Fuel pump system complete	1 set
110	Anti-loosening nut	1

Figure 9



Consumer Warranty and Repair Policy

Saito engines are guaranteed against workmanship and manufacturing defects for a period of 3 years from the original date of purchase. This warranty is limited to the original purchaser of the engine and is not transferable. Warranty repairs will **not** cover:

- Normal engine wear
- Damage due to insufficient maintenance
- Damage related to over-revving of engine due to small prop size or unreasonable use
- Rusted bearings
- Crash damage
- Damage due to use of improper fuel and/or glow plug
- Damage due to lean runs, such as rusted bearings, seized connecting rod or piston, etc.
- Damage caused by foreign objects (dirt or broken glow plug filaments)
- Damage caused by unreasonable mounting or running conditions (dust, insufficient cooling, improper mounting, improper propeller size, or lack of balancing, etc.)
- Damage due to improper disassembly
- Modifications of any kind

If your engine needs repair, please do the following:

1. Ship your engine in its original box, freight prepaid to:

Horizon Service Center
Attn: Saito Service
4105 Fieldstone Road
Champaign, IL 61822
Phone: (217) 355-9511

Include complete name and address information inside the carton, as well as clearly writing it on the outer label/return address area.

2. Include a note containing a brief summary of the difficulty and include the following information:

- Nitro content and brand of fuel
- Propeller size and brand used
- Type of glow plug used
- Type of engine mount
- Approximately how much running time the engine had before difficulty

Date your correspondence and be sure your name and address appear on this enclosure. Also, include a phone number where you can be reached during the business day.

Warranty Repairs

To receive warranty service, you must include your original dated sales receipt to verify your proof-of-purchase date. Providing that warranty conditions have been met, your engine will be repaired without charge.

Non-Warranty Repairs

Should your repair cost exceed 50% of the retail purchase cost, you will be provided with an estimate advising you of your options. Any return freight for non-warranty repairs will be billed to the consumer.

Please advise us of the payment method you prefer to use. The Horizon Service Center accepts VISA, MasterCard, or money orders. If you prefer to use a credit card, include your card number and expiration date.

The Consumer Warranty Registration in the back of this manual must be completely filled out and mailed to:

Horizon Service Center
Attn: Saito Warranty
4105 Fieldstone Road
Champaign, IL 61822



Please cut on dotted line.

Consumer Warranty Registration

Complete this form and mail along with your dated sales receipt (send copy, keep original for your files)
within 10 days of purchase to:

Horizon Service Center

Attn: Saito Warranty Dept.

4105 Fieldstone Road

Champaign, IL 61822

Engine Type _____

Date of Purchase _____

Owner's Name _____

Street Address _____

City/State/Zip _____

Daytime Phone Number _____

Purchased From: _____

Dealer's Name _____

Street Address _____

City/State/Zip _____



Exclusively distributed by
Horizon Hobby, Inc., Champaign, IL 61822
www.horizonhobby.com

© Copyright, 2000 Stock #SAIMAN1 updated 9-7-2000

SAI.99.36